

2021 Gulf of Maine Seabird Working Group Census Results

(Results from region-wide count period are reported here - refer to island synopsis or contact island staff for season totals)

Census Window: June 12-22 (peak of term incubation)

Data missing or numbers need to be verified

NOVA SCOTIA		DATE	METHOD	COTE	ARTE	ROST	LETE	LAGU	ATPU	RAZO	COMU	FLEDGE/NEST	N	SD	METHOD	EGGS/NEST	N	SD	OBSERVER
ISLAND NAME	DATE	METHOD	COTE	ARTE	ROST	LETE	LAGU	ATPU	RAZO	COMU	FLEDGE/NEST	N	SD	METHOD	EGGS/NEST	N	SD	OBSERVER	
North Brother	6/11	N			51										1.67	51	0.52	D'Eon et al.	
North Brother	6/11	N	771												2.52	25	0.51	D'Eon et al.	
North Brother	6/11	N		65											2.00	23	0.30	D'Eon et al.	
South Brother																			
2021 NS COAST TOTAL			771	65	51														
2020 NS COAST TOTAL			664		49														
2019 NS COAST TOTAL			372	35	47	-	-												
2018 NS COAST TOTAL			0	0	0	0	0												
2017 NS COAST TOTAL						0	0												
2016 NS COAST TOTAL			619		50														
2015 NS COAST TOTAL			687		42														
2014 NS COAST TOTAL			651	44	38	0	0												
2013 NS COAST TOTAL			596	50	38	0	0												
2012 NS COAST TOTAL			574	50	34	0	0												
2011 NS COAST TOTAL			631	60	38	0	0												
2010 NS COAST TOTAL			632	54	38	0	0												
2009 NS COAST TOTAL			473	42	42	0	0												
2008 NS COAST TOTAL			527	28	55	0	0												

*2013 Data for The Brothers: reported as total count, with 38 roseates.

NEW BRUNSWICK		DATE	METHOD	COTE	ARTE	ROST	LETE	LAGU	ATPU	RAZO	COMU	FLEDGE/NEST	N	SD	METHOD	EGGS/NEST	N	SD	OBSERVER
ISLAND NAME	DATE	METHOD	COTE	ARTE	ROST	LETE	LAGU	ATPU	RAZO	COMU	FLEDGE/NEST	N	SD	METHOD	EGGS/NEST	N	SD	OBSERVER	
Machias Seal	NO CENSUS		no census									0.00	1	0	3	2.00	1	0	UNB
Machias Seal	NO CENSUS			no census								0.00	81	0.00	3	1.50	81	0.50	UNB
Machias Seal	7/6 - 7/8	NP								942									UNB
Machias Seal	NO CENSUS							no census				0.20	91	0.20	3				
Machias Seal	NO CENSUS								no census			0.25	84	0.40	3				
2021 NB COAST TOTAL										942									
2020 NB COAST TOTAL		NP								620									No tern census due to COVID-19 restrictions; no terns present when crew arrived on 4 July
2019 NB COAST TOTAL		NP	25	430	0	0	0												A tern census was not conducted this year, but it is estimated that there were up to 500 attempted nests island-wide, with a probable species distribution of 85% ARTE and 5% COTE, similar to last year.
2018 NB COAST TOTAL		NP	17	459	0	0	0												
2017 NB COAST TOTAL		NP	18	282	0	0	0												Estimated 300 nesting pairs from visual estimates, applied 2016 ratio of 94:6 ARTE:COTE
2016 NB COAST TOTAL		NP	11	165	0	0	0												A tern census was not conducted this year, but it is estimated that there were up to 175 attempted nests island-wide, with a probable species distribution of 94% ARTE and 6% COTE, similar to last year.
2015 NB COAST TOTAL		NP	6	144	0	0	0												
2014 NB COAST TOTAL		NP	4	134	0	0	0												
2013 NB COAST TOTAL		NP	4	86	0	0	0												Data reported for Machias Seal is reported as total count (90); species not separated. Species ratio of 96% ARTE and 4% COTE applied. Count spans entire season. Number of nests during census window not reported
2012 NB COAST TOTAL		NP	2	48	0	0	0												no census conducted, estimate of 300-500 birds on island; reported 50 nests from visual estimation w/ 96% ARTE and 4% COTE species ratio, lower than previous 2 years.
2011 NB COAST TOTAL		NP	3	72	0	0	0												300-500 birds on island, reported 75 nests from visual estimation with 96% ARTE and 4% COTE species ratio; 33 nests found in marked plots,
2010 NB COAST TOTAL		NP	7	168	0	0	0												300-500 birds on island, reported 175 nests with 96% ARTE and 4% COTE species ratio; 94 nests found in marked plots
2009 NB COAST TOTAL		NP	6	144	0	0	0												35 nests found in marked plots, used 96% ARTE and 4% COTE species ratio
2008 NB COAST TOTAL		NP	5	117	0	0	0												74 nests found in marked plots, used 96% ARTE and 4% COTE species ratio
2007 NB COAST TOTAL		NP	3	72	0	0	0												
2006 NB COAST TOTAL		NP	213	904	0	0	0												
2005 NB COAST TOTAL		NP	1066	2158	0	0	0												

MAINE		DATE	METHOD	COTE	ARTE	ROST	LETE	LAGU	ATPU	RAZO	COMU	FLEDGE/NEST	N	SD	METHOD	EGGS/NEST	N	SD	OBSERVER
ISLAND NAME	DATE	METHOD	COTE	ARTE	ROST	LETE	LAGU	ATPU	RAZO	COMU	FLEDGE/NEST	N	SD	METHOD	EGGS/NEST	N	SD	OBSERVER	
Eastern Brothers																			USFWS
Petit Manan	6/17 - 6/18	N	907									0.12	43		2	1.79	42		USFWS
Petit Manan	6/17 - 6/18	N		426								0.16	42		2	1.72	43		USFWS
Petit Manan	6/17 - 6/18	N			0														USFWS
Petit Manan	6/17 - 6/18	N					820												USFWS
Petit Manan	season total							87				0.10	87		3	1.00	87		USFWS
Petit Manan	season total	N							5			0.40	5		3	1.00	5		USFWS
Ship Island	6/23 and 7/6	N	417									0.94	45		2	1.78	426		USFWS

ISLAND NAME	DATE	METHOD	COTE	ARTE	ROST	LETE	LAGU	ATPU	RAZO		FLEDGE/NEST	N	SD	METHOD	EGGS/NEST	N	SD	OBSERVER
White & Seavey Islands	6/16 - 6/18	N	3,412								0.33	116	0.47	1.2	2.16	116	0.88	
White & Seavey Islands	thru 6/20	N		1							0.00	1	0.00	3	1.00	1	0.00	
White & Seavey Islands	thru 6/20	N			112						0.65	82	0.61	3	1.78	113	0.54	
2021 NH TOTAL			3,412	1	112	0	0											
2020 NH TOTAL			3,280	1	96	0	0											
2019 NH TOTAL			2,900	1	80	0	0	0	0	0								
2018 NH TOTAL			2,175	1	55	0	0	-	-	-								
2017 NH TOTAL			3,210	2	92	0	0											
2016 NH TOTAL			2,985	3	83	0	0											
2015 NH TOTAL			2,262	2	68	0	0											
2014 NH TOTAL			2,548	3	69	0	0											
2013 NH TOTAL			2,269	2	51	0	0											
2012 NH TOTAL			2,044	4	51	0	0											
2011 NH Total			2,447	3	42	0	0											
2010 NH Total			2,251	6	48	0	0											
2009 NH Total			1,993	6	34	0	0											
2008 NH Total			2,011	6	40	0	0											
2007 NH Total			2,121	5	52	0	0											

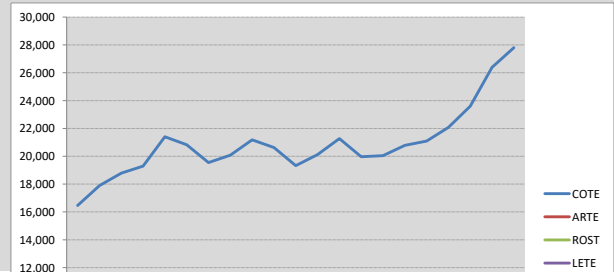
MASSACHUSETTS																		
ISLAND NAME	DATE	METHOD	COTE	ARTE	ROST	LETE	LAGU				FLEDGE/NEST	N	SD	METHOD	EGGS/NEST	N	SD	OBSERVER
North Shore region			260	0	0	476	0											MDFW
South Shore region			1	0	0	574	0											MDFW
Lower Cape region			abundant	0	8	1,595	abundant											MDFW
North Monomoy	6/10	VE	0	0	0													FWS
Minimoy	6/17	VE	80		0	0												FWS
Minimoy					0													
Minimoy						0												
South Monomoy	NO CENSUS		no census															FWS
South Monomoy	NO CENSUS				no census													FWS
South Monomoy	6/6 thru 6/17	NP				619												FWS
South Monomoy	NO CENSUS						no census											FWS
Upper Cape region			62	0	0	854	0											MDFW
Buzzards Bay region			7,338	0	3,111	358	0											MDFW
Bird Island			3,154	0	1,778													MDFW
Ram Island			4,108	0	1,333													MDFW
Elizabeth Islands region			1,539	1	3	15	0											MDFW
Penikese Island			1,507	1	3													MDFW
Martha's Vineyard region			538	0	0	280	0											MDFW
Nantucket region			96	0	24	970	0											MDFW

2021 MASSACHUSETTS Totals (GOM only)*																		
2020 MASSACHUSETTS Totals (GOM only)*																		
2019 MASSACHUSETTS Totals (GOM only)			14,344	0	12	12	3,659	0	0	0								
2018 MASSACHUSETTS Totals (GOM only)			13,472	0	30	499	3,272	0	0	0								
2017 MASSACHUSETTS Totals (GOM only)			11,723	0	11	751	2,714											
2016 MASSACHUSETTS Totals (GOM only)			10,505	0	12	839	2,738											
2015 MASSACHUSETTS Totals (GOM only)			9,207	0	11	532	1,424											
2014 MASSACHUSETTS Totals (GOM only)			9,636	0	8	1,713	2,089											
2013 MASSACHUSETTS Totals (GOM only)			9,104	0	8	1,872	1,863											
2012 MASSACHUSETTS Totals (GOM only)			9,200	0	8	1,268	1,253											
2011 MASSACHUSETTS Totals (GOM only)			10,147	0	12	2,438	1,581											
2010 MASSACHUSETTS Totals (GOM only)			9,413	2	9	1,892	1,249											
2009 MASSACHUSETTS Totals (GOM only)			8,862	4	0	1,846	1,618											
2008 MASSACHUSETTS Totals			10,690	2	31	1,242	1,582											
2007 MASSACHUSETTS Totals			10,740	1	45	1,853	1,498											

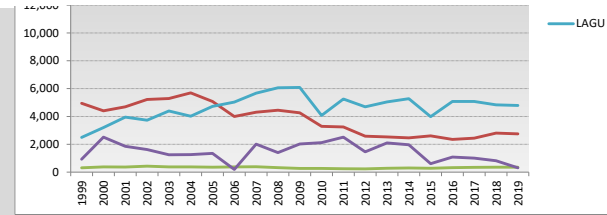
*Not all colonies censused in 2021 due to COVID-19
 *Not all colonies censused in 2020 due to COVID-19

Year	COTE	ARTE	ROST	LETE	LAGU	ATPU	RAZO	COMU	
2021 GULF OF MAINE TOTALS	2021	Not tallied due to numerous incomplete censuses in GoM in 2021							
2020 GULF OF MAINE TOTALS	2020	Not tallied due to numerous incomplete censuses in GoM in 2020							
2019 GULF OF MAINE TOTALS	2019	27,802	2,746	358	308	4,786	1,186	465	
2018 GULF OF MAINE TOTALS	2018	26,388	2,807	358	818	4,840			
2017 GULF OF MAINE TOTALS	2017	23,598	2,435	348	1,004	5,074			
2016 GULF OF MAINE TOTALS	2016	22,072	2,351	323	1,077	5,080			
2015 GULF OF MAINE TOTALS	2015	21,088	2,608	279	613	3,987			
2014 GULF OF MAINE TOTALS	2014	20,783	2,464	295	1,962	5,272			
2013 GULF OF MAINE TOTALS	2013	20,047	2,525	282	2,096	5,040			
2012 GULF OF MAINE TOTALS	2012	19,965	2,580	233	1,460	4,686			
2011 GULF OF MAINE TOTALS	2011	21,266	3,247	243	2,513	5,256			
2010 GULF OF MAINE TOTALS	2010	20,125	3,293	265	2,123	4,069			
2009 GULF OF MAINE TOTALS	2009	19,331	4,265	260	2,022	6,085			
2008 GULF OF MAINE TOTALS	2008	20,630	4,450	326	1,404	6,059			
2007 GULF OF MAINE TOTALS	2007	21,176	4,306	391	2,011	5,669			
2006 GULF OF MAINE TOTALS	2006	20,076	3,991	371	193	5,033			

*Not all colonies censused in 2021 due to COVID-19
 *Not all colonies censused in 2020 due to COVID-19



2005 GULF OF MAINE TOTALS	2005		19,549	5,079	354	1,351	4,726			
2004 GULF OF MAINE TOTALS	2004		20,829	5,694	379	1,256	4,013			
2003 GULF OF MAINE TOTALS	2003		21,397	5,287	381	1,244	4,389			
2002 GULF OF MAINE TOTALS	2002		19,298	5,217	429	1,622	3,733			
2001 GULF OF MAINE TOTALS	2001		18,788	4,687	365	1,860	3,953			
2000 GULF OF MAINE TOTALS	2000		17,886	4,407	377	2,513	3,196			
1999 GULF OF MAINE TOTALS	1999		16,462	4,946	307	931	2,494			



Methods: N=nest count, NE=partial nest count & extrapolation NP=nesting pairs (visual estimate), VE=individual birds (visual estimate from island), VEB=individual birds (estimate from boat)

Productivity Methods: 1=feeding study, 2=fenced plot, 3=unfenced plot

Note: Productivity is expressed as the number of fledglings/nest, N=sample size, SD=standard deviation, 15-day old COTE and ARTE chicks are considered fledglings, study chicks found dead after fledge date are subtracted from productivity estimate. ROST chicks were considered fledged based on survival to 10 days and weights during the first few days of life.