

2013 Gulf of Maine Seabird Working Group Census Results
 (Results from region-wide count period are reported here - refer to island synopsis or contact island staff for season totals)

Census Window: June 12-22 (peak of tern incubation)

*not located in the Gulf of Maine or included in GOM totals
 numbers need to be verified

ISLAND NAME	GIS ID	DATE	METHOD	COTE	ARTE	ROST	LETE	LAGU	FLEDGE/NEST	N	SD	METHOD	EGGS/NEST	N	SD	OBSERVER	InGOM?
NOVA SCOTIA																	
North Brother		6/10	N	596	50												yes
North Brother						38							1.52	38	0.51		yes
South Brother																	yes
Grassy Island																	no
Country Island* (not in GOM)		6/16	N	426					1.59	51	0.72	1	2.2	64	0.62		no
Country Island* (not in GOM)		6/16	N		868				1.43	46	0.58	1	1.8	59	0.41		no
Country Island* (not in GOM)		6/16	N			16			1.18	16	0.40	1	1.6	16	0.51		no
2013 NS COAST TOTAL				596	50	38	0	0									
2012 NS COAST TOTAL				574	50	34	0	0									
2011 NS COAST TOTAL				631	60	38	0	0									
2010 NS COAST TOTAL				632	54	38	0	0									
2009 NS COAST TOTAL				473	42	42	0	0									
2008 NS COAST TOTAL				527	28	55	0	0									

* Data for The Brothers is reported as total count with 25 roseates.

ISLAND NAME	CIR #	DATE	METHOD	COTE	ARTE	ROST	LETE	LAGU	FLEDGE/NEST	N	SD	METHOD	EGGS/NEST	N	SD	OBSERVER	InGOM?
NEW BRUNSWICK																	
Machias Seal			NP	27	63				0.00				0			gomswg minutes	yes
2013 NB COAST TOTAL				27	63	0	0	0									
2012 NB COAST TOTAL				90	210	0	0	0									
2011 NB COAST TOTAL				120	280	0	0	0									
2010 NB COAST TOTAL				120	280	0	0	0									
2009 NB COAST TOTAL				10	25	0	0	0									
2008 NB COAST TOTAL				22	52	0	0	0									
2007 NB COAST TOTAL				0	0	0	0	0									
2006 NB COAST TOTAL				213	904	0	0	0									
2005 NB COAST TOTAL				1,066	2,158	0	0	0									

Data reported for Machias Seal is reported as total count (90); species not separated. Species ratio of 70% ARTE and 30% COTE applied. Count spans entire season. Number of nests during census window not reported
 no census conducted, estimate of 300-500 nests on island used average of 300 with 70% ARTE and 30% COTE species ratio, lower than previous 2 years.
 300-500 nests on island used average of 400 with 70% ARTE and 30% COTE species ratio; 33 nests found in marked plots,
 300-500 nests on island used average of 400 with 70% ARTE and 30% COTE species ratio; 94 nests found in marked plots
 35 nests found in marked plots, used 70% ARTE and 30% COTE species ratio
 74 nests found in marked plots, used 70% ARTE and 30% COTE species ratio

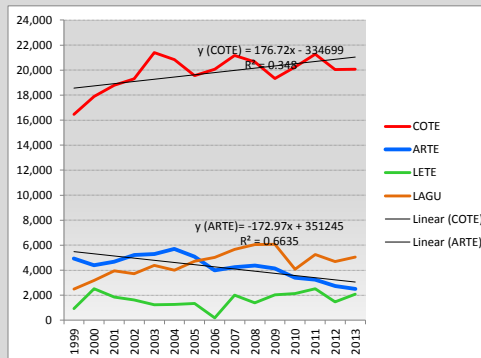
ISLAND NAME	CIR #	DATE	METHOD	COTE	ARTE	ROST	LETE	LAGU	FLEDGE/NEST	N	SD	METHOD	EGGS/NEST	N	SD	OBSERVER	InGOM?
MAINE																	
Eastern Brothers				0	0												yes
Petit Manan		6/19,20	N	817					0.51	30		2	1.77	53	0.57		yes
Petit Manan		6/19,20	N		616				0.35	78		2	1.49	116	0.50		yes
Petit Manan		6/19,20	N			2			0.00	2		3	2	2			yes
Petit Manan		6/19,20	N					750									yes
Ship Island		6/14	N	436					0.80	56		2	2.44				yes
Dry Money Ledge																	yes
Mason Ledge																	yes
Conary Nub																	yes
Ingalls Island																	yes
Little Nash Island																	yes
Wooden Ball Island																	yes
Eaton Island Ledge																	yes
Hardhead																	yes
Grass Ledge East																	yes
Spoon Ledge		6/10	N	60													yes
Green Ledge		6/10		28													yes
Seal Island NWR		6/15	N	1,448					0.28	92	0.45	1.2	1.99	92	0.58		yes
Seal Island NWR		6/15	N		1,039				0.65	46	0.48	1.2	1.78	46	0.42		yes
Seal Island NWR		6/15				0											yes
Matinicus Rock		6/15,16,17	N	171					1.13	30	0.51	1.2	2.5	30	0.51		yes
Matinicus Rock		6/15,16,17	N		519				0.76	51	0.71	1.2	1.78	51	0.46		yes
Matinicus Rock		6/15,16,17	N					579									yes
Metinic		6/19	N	209					0.76			2	2.8				yes
Metinic		6/19	N		142				1.1			2	2.1				yes
Metinic		6/19				0											yes
Poverty Nub																	yes
The Brothers (Muscongus Bay)		6/17	N	8													yes
Eastern Egg Rock		6/13,14,15	N	831					0.71	58	0.56	1.2	2.53	58	0.65		yes
Eastern Egg Rock		6/21	N		68				0.53	41	0.60	1.3	1.85	41	0.36		yes
Eastern Egg Rock		6/21	N			83			0.93	77		3	1.90	77	0.48		yes
Eastern Egg Rock		6/13,14,15	N					1,848	0.94	19	0.94	2	2.26	19	0.65		yes
Pond Island NWR		6/16	N	692					1.25	53	0.83	1.2	2.55	53	0.64		yes
Hen Island																	yes
Jenny Island		6/15	N	946					1.05	56	0.77	1.2	2.45	56	0.63		yes
Jenny Island		6/15	N			7			0.73	7		3	1.57	7	0.53		yes
Outer Green Island		6/17	N	1,143					1.15	52	0.80	1.2	2.62	52	0.49		yes
Stratton Island		6/12,13	N	1,284					1.41	41	0.74	1.2	2.02	41	0.57		yes
Stratton Island		6/13	N		3				0.00	3	0.00	3	2.00	3	0.00		yes
Stratton Island		6/13	N			93			1.27	93		1.3	1.88	93	0.55		yes
Stratton Island		6/13	N				92		0.72	110	0.96	3	1.97	110	0.37		yes
Wells Beach							0										yes
Crescent Surf		6/13	N	1			129						2.12	129	0.44		yes
Western Beach							0										yes
Goose Rocks Beach							0										yes
Reid Beach							0										yes
Popham Beach			N				3										yes
Higgins Beach							0										yes
Laudholm Farm							0										yes
Seawall Beach							0										yes
Ram Island							0										yes
2013 ME COAST TOTAL				8,074	2,387	185	224	3,177									14.00
2012 ME COAST TOTAL				8,145	2,478	140	192	3,433									
2011 ME COAST TOTAL				7,921	2,904	151	75	3,675									
2010 ME COAST TOTAL				7,822	3,063	170	231	2,820									
2009 ME COAST TOTAL				7,997	4,069	184	176	4,467									
2008 ME COAST TOTAL				7,397	4,297	200	162	4,477									
2007 ME COAST TOTAL				7,675	4,228	225	158	4,171									

NEW HAMPSHIRE																	
ISLAND NAME	GIS ID	DATE	METHOD	COTE	ARTE	ROST	LETE	LAGU	FLEDGE/NEST	N	SD	METHOD	EGGS/NEST	N	SD	OBSERVER	InGOM?
White & Seavey Islands		6/12	NP	2,269					1.30	162	0.86	1,3	2.40	162	0.76		yes
White & Seavey Islands		6/20	N		2				2.00	2	0.00	3	2.00	2	0.00		yes
White & Seavey Islands		6/20	N			51			1.14	51	0.66	3	1.69	51	0.71		yes
2013 NH TOTAL				2,269	2	51	0	0									
2012 NH TOTAL				2,044	4	51	0	0									
2011 NH Total				2,447	3	42	0	0									
2010 NH Total				2,251	6	48	0	0									
2009 NH Total				1,993	6	34	0	0									
2008 NH Total				2,011	6	40	0	0									
2007 NH Total				2,121	5	52	0	0									

MASSACHUSETTS																		
ISLAND NAME	GIS ID	DATE	METHOD	COTE	ARTE	ROST	LETE	LAGU	FLEDGE/NEST	N	SD	METHOD	EGGS/NEST	N	SD	OBSERVER	InGOM?	
NORTH SHORE																		
Misc sites, map 324	324000																yes	
Woodbridge I, Newburyport	324007															USFWS	yes	
Blackwater Rvr Grp, Salisbury	324007.1															ECGA	yes	
Chaces I, Newbury	324007.2															USFWS	yes	
Plum Is. River Group "	324008															USFWS	yes	
Parker River Group	324009															USFWS	yes	
Plum Is. Beach, Newbury	324009.1															USFWS	yes	
Roger I, Ipswich	324010															ECGA	yes	
Bagwell Island, Ipswich	324010.2															ECGA	yes	
Rowley Salt Marshes	324010.3															ECGA	yes	
Lords Island, Ipswich	324010.4															ECGA	yes	
Ipswich Salt Marshes	324010.5															ECGA	yes	
Crane Beach, Ipswich	324011															TTOR	yes	
Tinker's Island, Salem	324038																yes	
Saugus River Bridge	324038.1															Zendeh	yes	
Mystic River, Everett/Boston	324040.1															Fager, Zendeh	yes	
Chelsea River																	yes	
Belle Isle Marsh, Boston	324040.3															Zendeh	yes	
Central Sq. Piers, E. Boston	324040.6															Zendeh	yes	
Jeffries Point																Factor	yes	
Snake I, Winthrop	324042															NPS	yes	
Winthrop Beach																MAS, DCR	yes	
Yirrell Beach																MAS	yes	
Logan Airport, Boston	324042.1															Smith	yes	
Lovell I, Boston	324049.1															NPS	yes	
Rainsford I, Boston	324052.2															NPS	yes	
Spinnaker I.																NPS	yes	
SOUTH SHORE																		
The Glades																	MAS	yes
Hog Island Pier, Boston	324053																	yes
North R. Mouth, Scituate	324057																MAS	yes
Duxbury Beach, Duxbury	324058																MAS	yes
Duxbury Bay																		yes
Misc. sites, map 352	352000																	yes
Plymouth Beach, Plymouth	352001																Plymouth	yes
Ellisville Harbor, Plymouth	352001.1																MAS	yes
Sagamore Beach																	MAS	yes
Scusset Beach																	MAS	yes
UPPER CAPE																		
N. Sandwich Area	352002																MAS	yes
East Sandwich Beach																	MAS	yes
Town Neck Beach																	MAS	yes
Springhill Beach																	MAS	yes
Scorton Creek, Sandwich	352003																MAS	yes
Scorton Shores																	MAS	yes
Dowes Beach, Barnstable																	Barnstable	no
Craigville-Long Beach, Barnstable	352004																MAS	no
Squaw I., Barnstable	352004.1																MAS	no
Dunbar Pt, Barnstable	352005																Barnstable	no
Seagull Beach																	MAS	no
Great I, Yarmouth	352005.1																MAS	no
Sandy Neck, Barnstable	352006																Barnstable, MAS	yes
Gray's Beach, Yarmouth	352007																MAS	yes
West Dennis Beach, Dennis	352008																MAS	no
Miramar Beach (Dennis Port?)																		no
Washburn I, Falmouth	352018.1																WBNERR/DCR	no
Menauhant, East Falmouth																	MAS	no
South Cape Beach-Waquoit, Mashpee	352018																WBNERR/DCR	no
Popponeset Island Spit, Mashpee	352017.1																MAS	no
Dead Neck-Sampson I, Barnstable	352017																MAS	no
LOWER CAPE																		
Ridgevale Beach (west of Monomoy)																	MAS	no
Nauset-Orleans (Chatham line N to N)	352009																Orleans	yes
Nauset-Chatham (incl. S. Beach I.)	352013																MAS, MDFW	yes
Tern I, Chatham	352013.1																MAS	yes
Harding's Beach and Point, Chatham	352014																MAS	yes
Nauset, New Island - Orleans	352010																NPS	yes
S. Sunken Meadow, Eastham																	MAS	yes
Lieutenant Island																	MAS	yes
Nauset-Eastham (CG Beach & Plover)	352011																NPS	yes
Marconi Beach, Wellfleet	352012																NPS	yes
Pamet Harbor Bar, Truro	352012.1																MAS	yes
Cahoon Hollow, Wellfleet																	NPS	yes
Great I. - Jeremy Pt, Wellfleet.	352012.2																NPS	yes
Wood End-Long Pt., Provincetown	324060																NPS	yes
Race Pt Light Area, Provincetown	324061																NPS	yes
Race Pt CG Stat., Provincetown	324062																NPS	yes
Mission Bell, Provincetown	324062.1																	yes
Ballston Beach, Truro																	NPS	yes
Tasha's Area, Provincetown	324062.2																	yes
Beach Pt., Pilgrim Beach, Provincetow	324062.3																MAS	yes
High Head, Truro	324063																NPS	yes
North Monomoy					0	0	0											yes

<i>(Massachusetts continued)</i>																		
ISLAND NAME	GIS ID	DATE	METHOD	COTE	ARTE	ROST	LETE	LAGU	FLEDGE/NEST	N	SD	METHOD	EGGS/NEST	N	SD	OBSERVER	InGOM?	
Minimoy				0	0	0											yes	
Minimoy				0	0	0											yes	
South Monomoy		6/11,12,17	N	7,526					1.65	245	0.79	2	2.42	245	0.58		yes	
South Monomoy		6/11,12,17	N			8			1.50	8	0.64		1.63	8	0.52		yes	
South Monomoy		6/15,17	N				261										yes	
South Monomoy		6/11,12,17	N					974									yes	
NORTH SHORE (GOM only)																		
SOUTH SHORE (GOM only)																		
UPPER CAPE (GOM only)																		
LOWER CAPE (GOM only)																		
Bird Island* (Buzzards Bay)				2,645	0	793											no	
Ram Island* (Buzzards Bay)				3,511	0	543											no	
Penikese Island* (Buzzards Bay)				673.5	0.5	9											no	
2013 MASSACHUSETTS Totals (GOM only)				9,104	0	8	1,872	1,863										
2012 MASSACHUSETTS Totals (GOM only)				9,200	0	8	1,268	1,253										
2011 MASSACHUSETTS Totals (GOM only)				10,147	0	12	2,438	1,581										
2010 MASSACHUSETTS Totals (GOM only)				9,413	2	9	1,892	1,249										
2009 MASSACHUSETTS Totals (GOM only)				8,862	4	0	1,846	1,618										
2008 MASSACHUSETTS Totals				10,690	2	31	1,242	1,582										
2007 MASSACHUSETTS Totals				10,740	1	45	1,853	1,498										

	COTE	ARTE	ROST	LETE	LAGU
2013 GULF OF MAINE TOTALS	20,070	2,502	282	2,096	5,040
2012 GULF OF MAINE TOTALS	20,053	2,742	233	1,460	4,686
2011 GULF OF MAINE TOTALS	21,266	3,247	243	2,513	5,256
2010 GULF OF MAINE TOTALS	20,238	3,405	265	2,123	4,069
2009 GULF OF MAINE TOTALS	19,335	4,146	260	2,022	6,085
2008 GULF OF MAINE TOTALS	20,647	4,385	326	1,404	6,059
2007 GULF OF MAINE TOTALS	21,173	4,234	391	2,011	5,669
2006 GULF OF MAINE TOTALS	20,076	3,991	371	193	5,033
2005 GULF OF MAINE TOTALS	19,549	5,079	354	1,351	4,726
2004 GULF OF MAINE TOTALS	20,829	5,694	379	1,256	4,013
2003 GULF OF MAINE TOTALS	21,397	5,287	381	1,244	4,389
2002 GULF OF MAINE TOTALS	19,298	5,217	429	1,622	3,733
2001 GULF OF MAINE TOTALS	18,788	4,687	365	1,860	3,953
2000 GULF OF MAINE TOTALS	17,886	4,407	377	2,513	3,196
1999 GULF OF MAINE TOTALS	16,462	4,946	307	931	2,494



Methods: N=nest count, NE=partial nest count & extrapolation NP=nesting pairs (visual estimate), VE=individual birds (visual estimate from island), VEB=individual birds (estimate from boat)
Productivity Methods: 1=feeding study, 2=fenced plot, 3=unfenced plot
Note: Productivity is expressed as the number of fledglings/nest. N=sample size, SD=standard deviation, 15-day old COTE and ARTE chicks are considered fledglings, study chicks found dead after fledge date are subtracted from productivity estimate. ROST chicks were considered fledged based on survival to 10 days and weights during the first few days of life.