

2019 Gulf of Maine Seabird Working Group Census Results

(Results from region-wide count period are reported here - refer to island synopsis or contact island staff for season totals)

Census Window: June 12-22 (peak of tern incubation)

Data missing or numbers need to be verified

NOVA SCOTIA																		
ISLAND NAME	DATE	METHOD	COTE	ARTE	ROST	LETE	LAGU	ATPU	RAZO	COMU	FLEDGE/NEST	N	SD	METHOD	EGGS/NEST	N	SD	OBSERVER
North Brother	6/18	N	372								0.89	372		3	2.5	30	0.50	
North Brother	6/18	N		35							0.69	35		3	2	35	0.00	
North Brother	6/18	N			47						1.00	47		3	1.5	52	0.50	
South Brother																		
2019 NS COAST TOTAL			372	35	47	0	0	0	0	0								
2018 NS COAST TOTAL			0	0	0	0	0	0	0	0								
2017 NS COAST TOTAL						0	0											
2016 NS COAST TOTAL			619		50													
2015 NS COAST TOTAL			687		42													
2014 NS COAST TOTAL			651	44	38	0	0											
2013 NS COAST TOTAL			596	50	38	0	0											
2012 NS COAST TOTAL			574	50	34	0	0											
2011 NS COAST TOTAL			631	60	38	0	0											
2010 NS COAST TOTAL			632	54	38	0	0											
2009 NS COAST TOTAL			473	42	42	0	0											
2008 NS COAST TOTAL			527	28	55	0	0											

*2013 Data for The Brothers: reported as total count, with 38 roseates.

NEW BRUNSWICK																		
ISLAND NAME	DATE	METHOD	COTE	ARTE	ROST	LETE	LAGU	ATPU	RAZO	COMU	FLEDGE/NEST	N	SD	METHOD	EGGS/NEST	N	SD	OBSERVER
Machias Seal	Season Total	NP	25								0.11	9						
Machias Seal	Season Total	NP		430							0.25	151						
Machias Seal	June 18-20, 2019	NP						8635			0.49	75						
Machias Seal	June 23-24, 2019	NP							3715		0.49	67						
Machias Seal	July 23-24, 2019	N								277								
2019 NB COAST TOTAL		NP	25	430	0	0	0	8635	3715	277								
2018 NB COAST TOTAL		NP	17	459	0	0	0	0	0	0								
2017 NB COAST TOTAL		NP	18	282	0	0	0											
2016 NB COAST TOTAL		NP	11	165	0	0	0											
2015 NB COAST TOTAL		NP	6	144	0	0	0											
2014 NB COAST TOTAL		NP	4	134	0	0	0											
2013 NB COAST TOTAL		NP	4	86	0	0	0											
2012 NB COAST TOTAL		NP	2	48	0	0	0											
2011 NB COAST TOTAL		NP	3	72	0	0	0											
2010 NB COAST TOTAL		NP	7	168	0	0	0											
2009 NB COAST TOTAL		NP	6	144	0	0	0											
2008 NB COAST TOTAL		NP	5	117	0	0	0											
2007 NB COAST TOTAL		NP	3	72	0	0	0											
2006 NB COAST TOTAL		NP	213	904	0	0	0											
2005 NB COAST TOTAL		NP	1066	2158	0	0	0											

A tern census was not conducted this year, but it is estimated that there were up to 500 attempted nests island-wide, with a probable species distribution of 85% ARTE and 5% COTE, similar to last year.

Estimated 300 nesting pairs from visual estimates, applied 2016 ratio of 94:6 ARTE:COTE

A tern census was not conducted this year, but it is estimated that there were up to 175 attempted nests island-wide, with a probable species distribution of 94% ARTE and 6% COTE, similar to last year.

Data reported for Machias Seal is reported as total count (90); species not separated. Species ratio of 96% ARTE and 4% COTE applied. Count spans entire season. Number of nests during census window not reported

no census conducted, estimate of 300-500 birds on island; reported 50 nests from visual estimation w/ 96% ARTE and 4% COTE species ratio, lower than previous 2 years.

300-500 birds on island, reported 75 nests from visual estimation with 96% ARTE and 4% COTE species ratio; 33 nests found in marked plots,

300-500 birds on island, reported 175 nests with 96% ARTE and 4% COTE species ratio; 94 nests found in marked plots

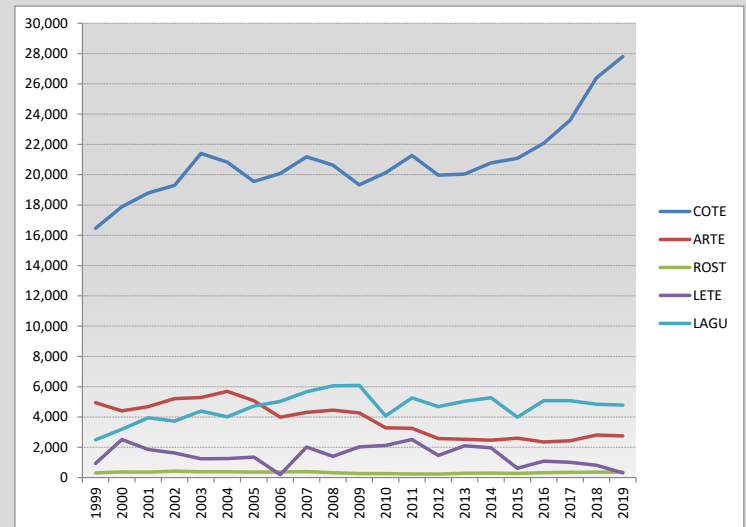
35 nests found in marked plots, used 96% ARTE and 4% COTE species ratio

74 nests found in marked plots, used 96% ARTE and 4% COTE species ratio

ISLAND NAME	DATE	METHOD	COTE	ARTE	ROST	LETE	LAGU	ATPU	RAZO	COMU	FLEDGE/NEST	N	SD	METHOD	EGGS/NEST	N	SD	OBSERVER
MAINE																		
ISLAND NAME	DATE	METHOD	COTE	ARTE	ROST	LETE	LAGU	ATPU	RAZO	COMU	FLEDGE/NEST	N	SD	METHOD	EGGS/NEST	N	SD	OBSERVER
Eastern Brothers	6/17	VEB	0															USFWS
Petit Manan	June 18-19	N	939								0.85	33		2	2.03	33		USFWS
Petit Manan	June 18-20	N		363							0.77	44		2	1.71	44		USFWS
Petit Manan		N			0													USFWS
Petit Manan		N					610											USFWS
Petit Manan		N						70			0.75	59		3				USFWS
Petit Manan		N							5									USFWS
Ship Island	6/19	N	9								0.57	16		2	2.05	16		USFWS
Dry Money Ledge	6/24	VEB	0															USFWS
Mason Ledge																		
Conary Nub	6/24	N	236															USFWS
Ingalls Island	6/18	N	4															USFWS
Squid Island Ledge	6/24	N	1															USFWS
Little Nash Island																		
Wooden Ball Island																		
Eaton Island Ledge																		
Hardhead																		
Grass Ledge East																		
Spoon Ledge																		
Green Ledge																		
Seal Island NWR	6/18	NE	1,324								0.89	73			1.84	73		Audubon
Seal Island NWR	6/18	NE		725							0.86	29			1.83	29		Audubon
Seal Island NWR		N						573			0.84	68						Audubon
Seal Island NWR		N							60									Audubon
Matinicus Rock	June 18-19	N	327								1.08	26			1.81	26		Audubon
Matinicus Rock	June 18-19	N		790							1.02	47			1.83	47		Audubon
Matinicus Rock	June 18-19	N					4											Audubon
Matinicus Rock								no census			0.75	64						Audubon
Matinicus Rock									no census		0.63	38						Audubon
Matinicus Rock		N								6								Audubon
Metinic	June 18-19	N	515								0.93	515			2.25	515		USFWS
Metinic	June 18-19	N		316							1.3	316			1.71	316		USFWS
Poverty Nub																		
The Brothers (Muscongus Bay)	6/7	VEB	0															USFWS
Eastern Egg Rock	June 16-17, 2019	N	1,067								1.13	69			2.04	69		Audubon
Eastern Egg Rock	June 1-20, 2019	N		70							0.40	53			1.74	53		Audubon
Eastern Egg Rock	June 1-20, 2019	N			73						1.10	83			1.43	83		Audubon
Eastern Egg Rock	June 16-17, 2019	N					333											Audubon
Eastern Egg Rock		N						188										Audubon
Western Egg Rock	6/19	N					180											Audubon
Pond Island NWR	6/17	N	1,159								1.41	73			1.97	73		Audubon
Pond Island NWR	6/17	N		7							1.25	12			1.58	12		Audubon
Pond Island NWR	6/17	N			0						0.50	2			1.00	2		Audubon
Hen Island	6/1 and 6/22	N	1															Audubon
Jenny Island	6/15	N	1,618								1.33	76			2.12	76		Audubon
Jenny Island	15-Jun	N		0														Audubon
Jenny Island	15-Jun	N			21						1.10	21			1.76	21		Audubon
Outer Green Island	6/15	N	1,717								1.32	51			2.12	51		Audubon
Outer Green Island	6/15	N		0														Audubon
Outer Green Island	6/15	N			0													Audubon
Stratton Island	15-Jun-19	N	1,244								1.17	67			1.99	67		Audubon
Stratton Island	15-Jun-19	N		9							0.73	11			1.82	11		Audubon
Stratton Island	15-Jun-19	N			125						1.28	77			1.70	77		Audubon
Stratton Island	6/12	N				84												Audubon
Wells Beach																		
Crescent Surf	6/12	N				156					0.20	156						USFWS

ISLAND NAME	DATE	METHOD	COTE	ARTE	ROST	LETE	LAGU	ATPU	RAZO	COMU	FLEDGE/NEST	N	SD	METHOD	EGGS/NEST	N	SD	OBSERVER
2014 MASSACHUSETTS Totals (GOM only)			9,636	0	8	1,713	2,089											
2013 MASSACHUSETTS Totals (GOM only)			9,104	0	8	1,872	1,863											
2012 MASSACHUSETTS Totals (GOM only)			9,200	0	8	1,268	1,253											
2011 MASSACHUSETTS Totals (GOM only)			10,147	0	12	2,438	1,581											
2010 MASSACHUSETTS Totals (GOM only)			9,413	2	9	1,892	1,249											
2009 MASSACHUSETTS Totals (GOM only)			8,862	4	0	1,846	1,618											
2008 MASSACHUSETTS Totals			10,690	2	31	1,242	1,582											
2007 MASSACHUSETTS Totals			10,740	1	45	1,853	1,498											

Year	COTE	ARTE	ROST	LETE	LAGU	ATPU	RAZO	COMU
2019 GULF OF MAINE TOTALS	27,802	2,746	358	308	4,786	9,466	3,780	283
2018 GULF OF MAINE TOTALS	26,388	2,807	358	818	4,840			
2017 GULF OF MAINE TOTALS	23,598	2,435	348	1,004	5,074			
2016 GULF OF MAINE TOTALS	22,072	2,351	323	1,077	5,080			
2015 GULF OF MAINE TOTALS	21,088	2,608	279	613	3,987			
2014 GULF OF MAINE TOTALS	20,783	2,464	295	1,962	5,272			
2013 GULF OF MAINE TOTALS	20,047	2,525	282	2,096	5,040			
2012 GULF OF MAINE TOTALS	19,965	2,580	233	1,460	4,686			
2011 GULF OF MAINE TOTALS	21,266	3,247	243	2,513	5,256			
2010 GULF OF MAINE TOTALS	20,125	3,293	265	2,123	4,069			
2009 GULF OF MAINE TOTALS	19,331	4,265	260	2,022	6,085			
2008 GULF OF MAINE TOTALS	20,630	4,450	326	1,404	6,059			
2007 GULF OF MAINE TOTALS	21,176	4,306	391	2,011	5,669			
2006 GULF OF MAINE TOTALS	20,076	3,991	371	193	5,033			
2005 GULF OF MAINE TOTALS	19,549	5,079	354	1,351	4,726			
2004 GULF OF MAINE TOTALS	20,829	5,694	379	1,256	4,013			
2003 GULF OF MAINE TOTALS	21,397	5,287	381	1,244	4,389			
2002 GULF OF MAINE TOTALS	19,298	5,217	429	1,622	3,733			
2001 GULF OF MAINE TOTALS	18,788	4,687	365	1,860	3,953			
2000 GULF OF MAINE TOTALS	17,886	4,407	377	2,513	3,196			
1999 GULF OF MAINE TOTALS	16,462	4,946	307	931	2,494			



Methods: N=nest count, NE=partial nest count & extrapolation NP=nesting pairs (visual estimate), VE=individual birds (visual estimate from island), VEB=individual birds (estimate from boat)

Productivity Methods: 1=feeding study, 2=fenced plot, 3=unfenced plot

Note: Productivity is expressed as the number of fledglings/nest, N=sample size, SD=standard deviation, 15-day old COTE and ARTE chicks are considered fledglings, study chicks found dead after fledge date are subtracted from productivity estimate. ROST chicks were considered fledged based on survival to 10 days and weights during the first few days of life.